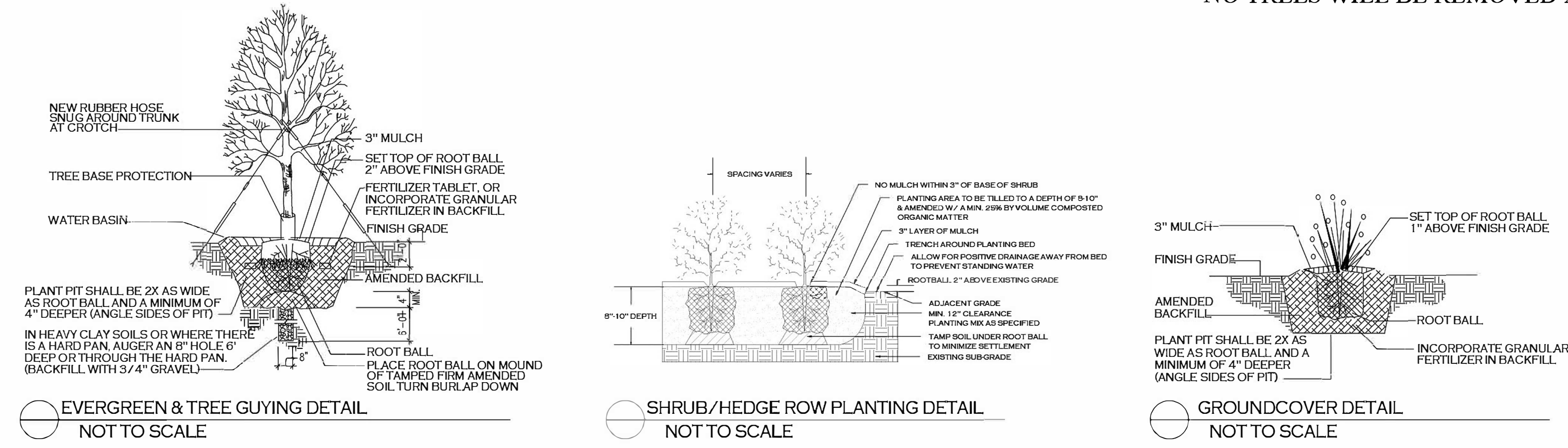
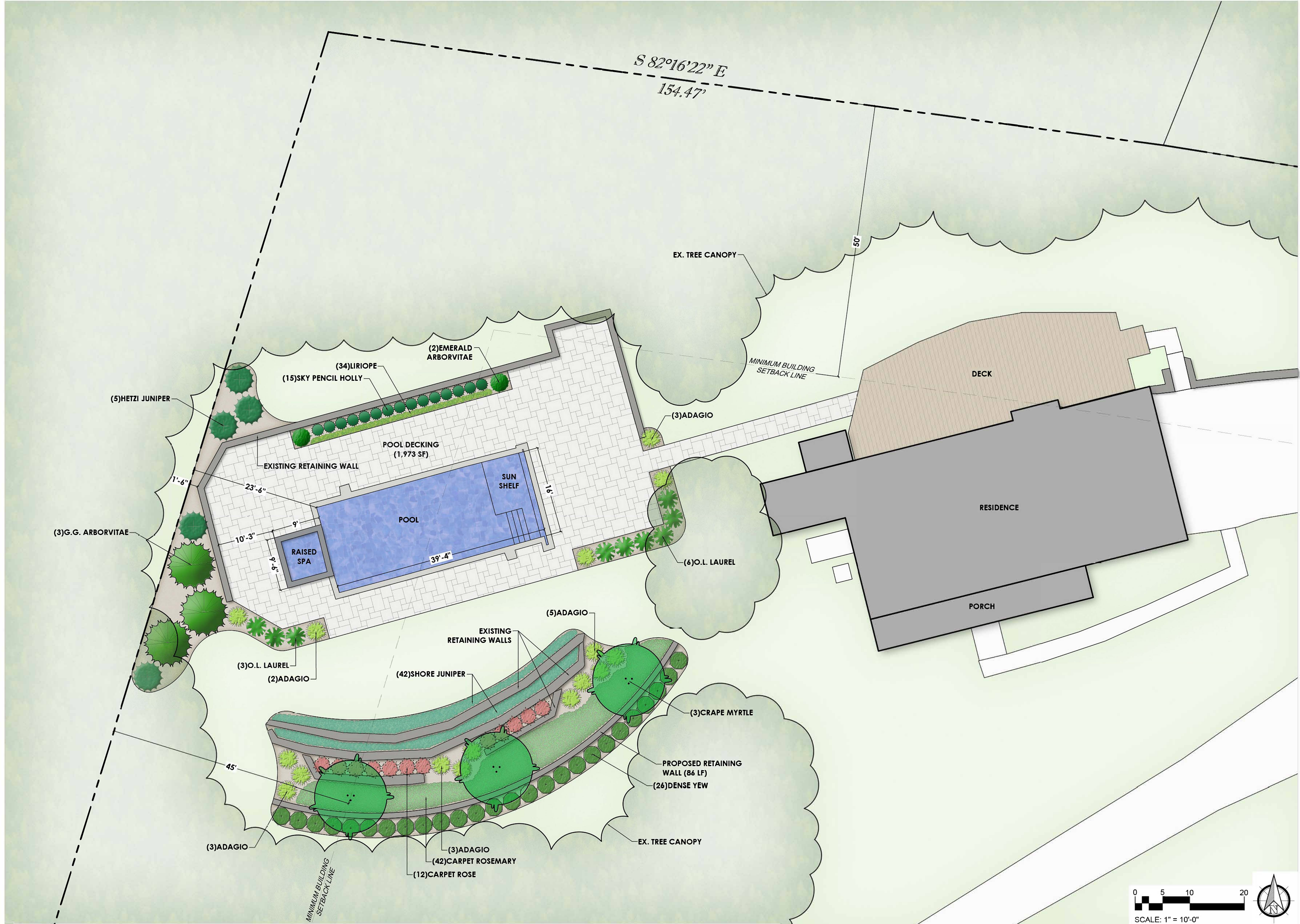


PLANTING NOTES

- CONTRACTOR IS RESPONSIBLE FOR PLANT MATERIALS AND INSTALLATION.
- TREAT ALL GROUND COVER BEDS WITH PRE-EMERGENT HERBICIDE PRIOR TO PLANTING. CONTRACTOR IS RESPONSIBLE FOR ALL WEEDING UNTIL FINAL ACCEPTANCE.
- ALL PLANT BEDS TO BE NEATLY LAID IN WITH 3" DEEP TRENCH EDGING BORDER.
- ALL GROUND COVER AND PLANT BEDS SHALL HAVE 2" OF SAND AND 2" OF PEAT MOSS OR FINE PINE BARK PLACED OVER THE ENTIRE AREA AND THEN MIXED INTO THE TOP 8" OF SOIL WITH A TILLER. FINAL GRADES FOR ALL PLANT BEDS SHALL BE 1" BELOW EDGE OF WALK OR CURBING SO THAT WHEN 3" OF MULCH IS ADDED THE MULCH WILL BE 2" ABOVE THE WALKS. TAPER MULCH DOWN TO EDGE OF WALK OR CURB.
- ALL AREAS WITHIN PLANT BEDS TO BE MULCHED WITH 3" DEEP LAYER OF PINE BARK NUGGET OR MINI-NUGGET MULCH.
- ALL TREES OF A SIMILAR SPECIES TO BE MATCHED IN SIZE AND UNIFORMITY.
- CONTRACTOR TO WARRANTY ALL PLANTINGS FOR A PERIOD OF ONE YEAR AFTER DATE OF FINAL ACCEPTANCE BY OWNER. WARRANTY TO INCLUDE ALL DEFECTS INCLUDING DEATH OR UNSATISFACTORY GROWTH, EXCEPT FOR DEFECTS RESULTING FROM LACK OF ADEQUATE MAINTENANCE, NEGLIGENCE OR ABUSE BY OWNER, ABNORMAL WEATHER CONDITIONS UNUSUAL FOR WARRANTY PERIOD.
- CONTRACTOR IS RESPONSIBLE FOR MAINTENANCE OF PLANTS UNTIL TIME OF FINAL ACCEPTANCE.
- SEED ALL AREAS DISTURBED BY CONSTRUCTION AND NOT DESIGNATED AS GROUND COVER AREAS. RECONSTRUCT DAMAGED LAWN AREAS.
- PROVIDE TREES, SHRUBS, AND PLANTS OF QUANTITY, SIZE AND GENUS SPECIES AND VARIETY SHOWN AND SCHEDULED FOR LANDSCAPE WORK AND COMPLYING WITH RECOMMENDATIONS AND REQUIREMENTS OF ANSI Z60.1 "AMERICAN STANDARD FOR NURSERY STOCK". PROVIDE HEALTHY, VIGOROUS STOCK, GROWN IN A RECOGNIZED NURSERY IN ACCORDANCE WITH GOOD HORTICULTURAL PRACTICE AND FREE OF DISEASE, INSECTS, EGGS, LARVAE AND DEFECTS SUCH AS KNOTS, SUN-SCALD, INJURIES, ABRASIONS OR DISFIGUREMENT. HEIGHT AND WIDTH SHOWN ARE MINIMUM SIZES.
- DO NOT MAKE SUBSTITUTIONS. IF SPECIFIED LANDSCAPE MATERIAL IS NOT OBTAINABLE, SUBMIT PROOF OF NON-AVAILABILITY FROM A MINIMUM OF 3 SUPPLIERS TO LANDSCAPE ARCHITECT, TOGETHER WITH A PROPOSAL FOR USE OF EQUIVALENT MATERIAL PRIOR TO FINAL BID DATE.
- SUBMIT TYPEWRITTEN INSTRUCTIONS RECOMMENDING PROCEDURES TO BE ESTABLISHED BY OWNER FOR MAINTENANCE OF LANDSCAPE WORK FOR ONE FULL YEAR, SUBMIT PRIOR TO EXPIRATION OF REQUIRED MAINTENANCE PERIOD.
- DELIVER PACKAGED MATERIALS IN CONTAINERS SHOWING WEIGHT, ANALYSIS AND NAME OF MANUFACTURER. PROTECT MATERIALS FROM DETERIORATION DURING DELIVERY, AND WHILE STORED AT THE SITE.
- DELIVER TREES AND SHRUBS AFTER PREPARATIONS FOR PLANTING HAS BEEN COMPLETED AND PLANT IMMEDIATELY. IF PLANTING IS DELAYED MORE THAN 6 HOURS AFTER DELIVERY, SET TREES AND SHRUBS IN SHADE. PROTECT FROM WEATHER AND MECHANICAL DAMAGE, AND KEEP ROOTS MOIST BY COVERING WITH MULCH, BURLAP OR OTHER ACCEPTABLE MEANS OF RETAINING MOISTURE.
- DETERMINE LOCATION OF UNDERGROUND UTILITIES AND PERFORM WORK IN A MANNER WHICH WILL AVOID POSSIBLE DAMAGE. HAND EXCAVATE, AS REQUIRED, MAINTAIN GRADE STAKES SET BY OTHERS UNTIL REMOVAL IS MUTUALLY AGREED UPON BY PARTIES CONCERNED.
- PROVIDE NEW TOPSOIL, WHICH IS FERTILE, FRIABLE, NATURAL LOAM, SURFACE SOIL, REASONABLY FREE OF SUBSOIL, CLAY LUMPS, BRUSH, WEEDS AND OTHER LITTER, AND FREE OF ROOTS, STUMPS, STONES LARGER THAN 2" IN ANY DIMENSION, AND OTHER EXTRANEOUS OR TOXIC MATTER HARMFUL TO PLANT GROWTH. TOPSOIL TO HAVE A MINIMUM 5-8% ORGANIC MATERIAL. ESTABLISHED BY LABORATORY BURN TEST. OBTAIN TOPSOIL FROM LOCAL SOURCES OR FROM AREAS HAVING SIMILAR OIL CHARACTERISTICS TO THAT FOUND ON SITE. OBTAIN TOPSOIL ONLY FROM NATURALLY, WELL DRAINED SITES WHERE TOPSOIL OCCURS IN A DEPTH OF NOT LESS THAN 4"; DO NOT OBTAIN FROM BOGS OR MARSHES.
- BEGIN MAINTENANCE IMMEDIATELY AFTER PLANTING. MAINTAIN TREES, SHRUBS AND OTHER PLANTINGS BY PRUNING, WATERING, CULTIVATING AND WEEDING AS REQUIRED FOR HEALTHY GROWTH. RESET PLANTING SAUCERS. RESET TREES AND SHRUBS TO PROPER GRADES OR VERTICAL POSITION AS REQUIRED. SPRAY AS REQUIRED TO KEEP TREES AND SHRUBS FREE OF INSECTS AND DISEASE. MAINTAIN LAWN BY WATERING, FERTILIZING, WEEDING, MOWING, TRIMMING AND OTHER OPERATIONS SUCH AS ROLLING, REGRADING AND REPLANTING AS REQUIRED TO ESTABLISH A SMOOTH, ACCEPTABLE LAWN, FREE OF ERODED OR BARE AREAS.
- WHERE INSPECTED LANDSCAPE WORK DOES NOT COMPLY WITH REQUIREMENTS, REPLACE REJECTED WORK AND CONTINUE SPECIFIED MAINTENANCE UNTIL REINSPECTED BY LANDSCAPE ARCHITECT AND FOUND TO BE ACCEPTABLE. REMOVE REJECTED PLANTS AND MATERIALS PROMPTLY FROM THE PROJECT SITE.
- THE QUANTITIES INDICATED ON THE PLANT LIST AND PLAN ARE PROVIDED FOR THE CONVENIENCE OF THE CONTRACTOR. THE CONTRACTOR SHALL BE RESPONSIBLE FOR HIS OWN QUANTITY CALCULATION AND THE LIABILITY WHICH PERTAINS TO THOSE QUOTATIONS. ANY DISCREPANCY SHALL BE CALLED TO THE ATTENTION OF THE LANDSCAPE ARCHITECT IMMEDIATELY.
- CARE SHALL BE TAKEN TO PROTECT ALL EXISTING TREES TO REMAIN. SHRUBS INDICATED FOR REMOVAL SHALL INCLUDE ENTIRE ROOT REMOVAL.
- TREE PROTECTION TO BE PROVIDED AS INDICATED, AND REMOVAL AFTER CONSTRUCTION IS COMPLETED.
- ALL GRADING AROUND EXISTING TREES SHALL BE DONE BY HAND.
- ANY TREE ROOTS EXPOSED BY CONSTRUCTION ACTIVITY SHALL BE PRUNED FLUSH WITH GROUND AND COVERED WITH BACKFILL AS SOON AS POSSIBLE.
- CONTRACTOR TO REPLACE ANY PLANTING MATERIALS THAT ARE MORE THAN 25% DEAD OR IN ANY UNHEALTHY CONDITION AT THE END OF THE WARRANTY PERIOD.
- LOCATIONS OF ALL PLANT BEDS AND TREES TO BE STAKED AND APPROVED BY LANDSCAPE ARCHITECT PRIOR TO PLANTING.
- SCARIFY TREE PITS BEFORE PLANTING. VERIFY THAT ALL TREE PITS ADEQUATELY DRAIN BEFORE PLANTING TREES.
- IF ROCK IS ENCOUNTERED, CONTRACTOR, TO REMOVE ROCK AND PROVIDE DRAINAGE AWAY FROM EACH TREE PIT.
- SHRUBS AND GROUND COVER BEDS TO BE PLANTED IN A TRIANGULAR SPACING.
- PROVIDE TRUE RADII FOR THE LAYOUT OF ALL PLANT BEDS.
- REFER TO AMERICAN STANDARDS FOR NURSERY STOCK (ANSI) REGARDING TREE FERTILIZATION AND PRUNING.



NO TREES WILL BE REMOVED AS PART OF THIS PROJECT



PLANT SCHEDULE

SCIENTIFIC NAME	COMMON NAME	QUANTITY	SIZE/SPACING
TREES			
Lagerstroemia indica 'Natchez'	Natchez Crape Myrtle	3	2" cal
Juniperus chinensis 'Hetzi Columnaris'	Hetzi Juniper	5	6-7' ht
Thuja 'Green Giant'	Green Giant Arborvitae	3	10' ht; 10' OC
Thuja occidentalis 'Smaragd'	Emerald Arborvitae	2	6-7' ht
SHRUBS			
Taxus x media 'Densiformis'	Dense Yew	26	30" ht; 3.5' OC
Ilex crenata 'Sky Pencil'	Sky Pencil Holly	15	3' ht; 2' OC
Prunus laurocerasus 'Otto Luyken'	Otto Luyken Laurel	9	3 gal; 3.5' OC
Rosa 'Noare'	Carpet Rose	5	3 gal; 3' OC
GROUND COVER, PERENNIALS, & GRASSES			
Miscanthus sinensis 'Adagio'	Adagio Grass	16	3 gal; 3.5' OC
Liriope muscari 'Variegata'	Variegated Liriope	34	4" pot; 12" OC
Rosmarinus officinalis 'Huntington Carpet'	Carpet Rosemary	42	1 gal; 3' OC
Juniperus conferta 'Blue Pacific'	Shore Juniper	42	1 gal; 3' OC

HELM RESIDENCE
1310 OTTER CREEK ROAD
FOREST HILLS, DAVIDSON CO., TN

ISSUE DATE: 6.13.2023

REVISIONS

DRAWN BY: JPS

LANDSCAPE PLAN

SHEET:

L1

