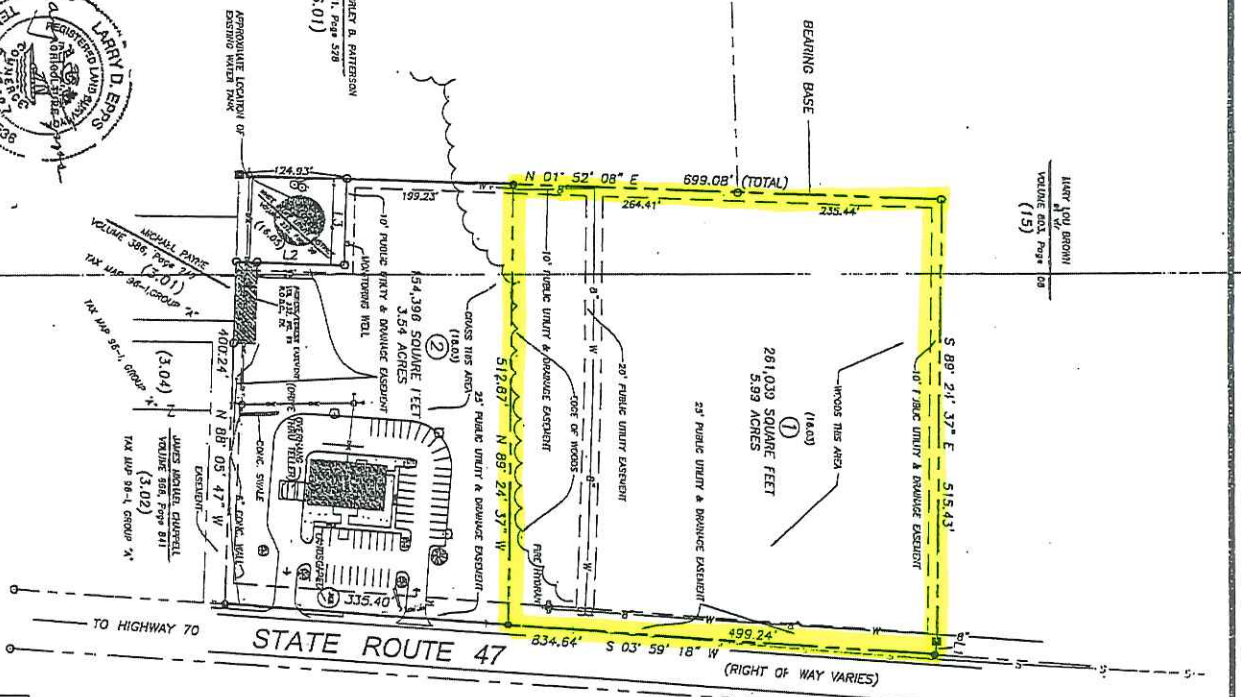


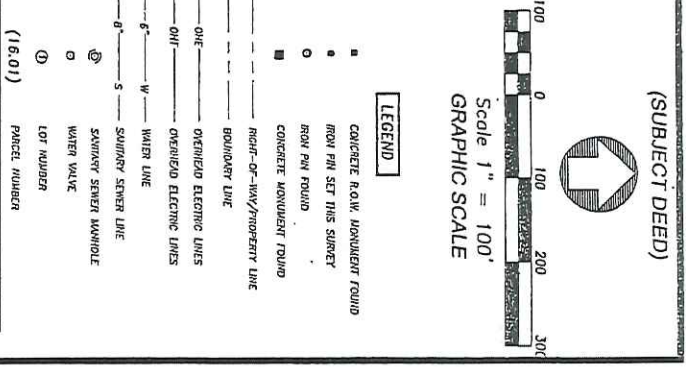
NUMBER	BEARING	DISTANCE
L1	S 82° 46' 30" E	15.97'
L2	N 01° 49' 35" E	129.00'
L3	N 88° 17' 30" W	100.00'

Judith W. Fraley, Registrar
 State of Tennessee
 Division of Real Estate
 1500 4th Avenue, N.E.
 Nashville, TN 37203
 (615) 253-3000
 FAX (615) 253-3000
 www.tn.gov
 Page 52-52

- OWNERS) FIRST FARMERS AND MERCHANTS BANK
- LOCATION) 12th, CIVIL DISTRICT
DICKSON COUNTY, TENNESSEE
PARCEL No. 86, PAGE 16, CO. 3
REGISTERED OFFICE OF DICKSON CO., TN.
- RECORD(S) RECORDS 18-100-04-100-187
- ZONING) MINIMUM SETBACK REQUIREMENTS, C-3
- UTILITY NOTE) THIS SURVEYOR HAS NOT PROVIDED LOCATIONS FOR THE INTERFERING UTILITIES SHOWN ON THE ADJOINING PLATS SINCE THESE UTILITIES ARE NOT SHOWN ON THE SURVEY. THE SURVEYOR HAS NOT PROVIDED LOCATIONS FOR THE INTERFERING UTILITIES SHOWN ON THE ADJOINING PLATS SINCE THESE UTILITIES ARE NOT SHOWN ON THE SURVEY. THE SURVEYOR HAS NOT PROVIDED LOCATIONS FOR THE INTERFERING UTILITIES SHOWN ON THE ADJOINING PLATS SINCE THESE UTILITIES ARE NOT SHOWN ON THE SURVEY.



CERTIFICATE OF OVERSHPIP AND DELIGATION	CERTIFICATE OF CORRECT ACCURACY	CERTIFICATE OF APPROVAL OF SURVEY	CERTIFICATE OF APPROVAL OF OBTAINING RIGHTS	CERTIFICATE OF APPROVAL OF ACQUISITION OF INTERESTS
I, the Surveyor, certify that I am the author of the above plat and that I am a duly licensed Surveyor in the State of Tennessee. I have been duly sworn and have taken the oath of office. I have complied with the provisions of the laws of the State of Tennessee and have followed the rules and regulations of the Board of Surveyors. I have caused a correct and true copy of the above plat to be filed in the office of the Register of Deeds for the County of Dickson, Tennessee, and have caused a copy to be filed in the office of the Register of Deeds for the County of Dickson, Tennessee.	I, the Surveyor, certify that the above plat is a correct and true copy of the original plat as filed in the office of the Register of Deeds for the County of Dickson, Tennessee. I have caused a correct and true copy of the above plat to be filed in the office of the Register of Deeds for the County of Dickson, Tennessee, and have caused a copy to be filed in the office of the Register of Deeds for the County of Dickson, Tennessee.	I, the Surveyor, certify that the above plat is a correct and true copy of the original plat as filed in the office of the Register of Deeds for the County of Dickson, Tennessee. I have caused a correct and true copy of the above plat to be filed in the office of the Register of Deeds for the County of Dickson, Tennessee, and have caused a copy to be filed in the office of the Register of Deeds for the County of Dickson, Tennessee.	I, the Surveyor, certify that the above plat is a correct and true copy of the original plat as filed in the office of the Register of Deeds for the County of Dickson, Tennessee. I have caused a correct and true copy of the above plat to be filed in the office of the Register of Deeds for the County of Dickson, Tennessee, and have caused a copy to be filed in the office of the Register of Deeds for the County of Dickson, Tennessee.	I, the Surveyor, certify that the above plat is a correct and true copy of the original plat as filed in the office of the Register of Deeds for the County of Dickson, Tennessee. I have caused a correct and true copy of the above plat to be filed in the office of the Register of Deeds for the County of Dickson, Tennessee, and have caused a copy to be filed in the office of the Register of Deeds for the County of Dickson, Tennessee.



FLOOD NOTE:
 THE TOWN OF WHITE BLUFF, TENNESSEE DOES NOT PARTICIPATE IN THE NATIONAL FLOOD PROGRAM, THEREFORE, THIS SURVEYOR IS UNABLE TO DETERMINE IF THE SUBJECT PROPERTY AS SHOWN HEREON IS WITHIN A FLOOD HAZARD ZONE.

SHARONDALE SURVEYING INC.

4205 HILLSBORO PIKE
 HOBBS BUILDING, SUITE 301
 NASHVILLE, TN 37215
 (615) 292-1043
 FAX (615) 292-7870
 Email: sharondale@south.net

FINAL PLAT

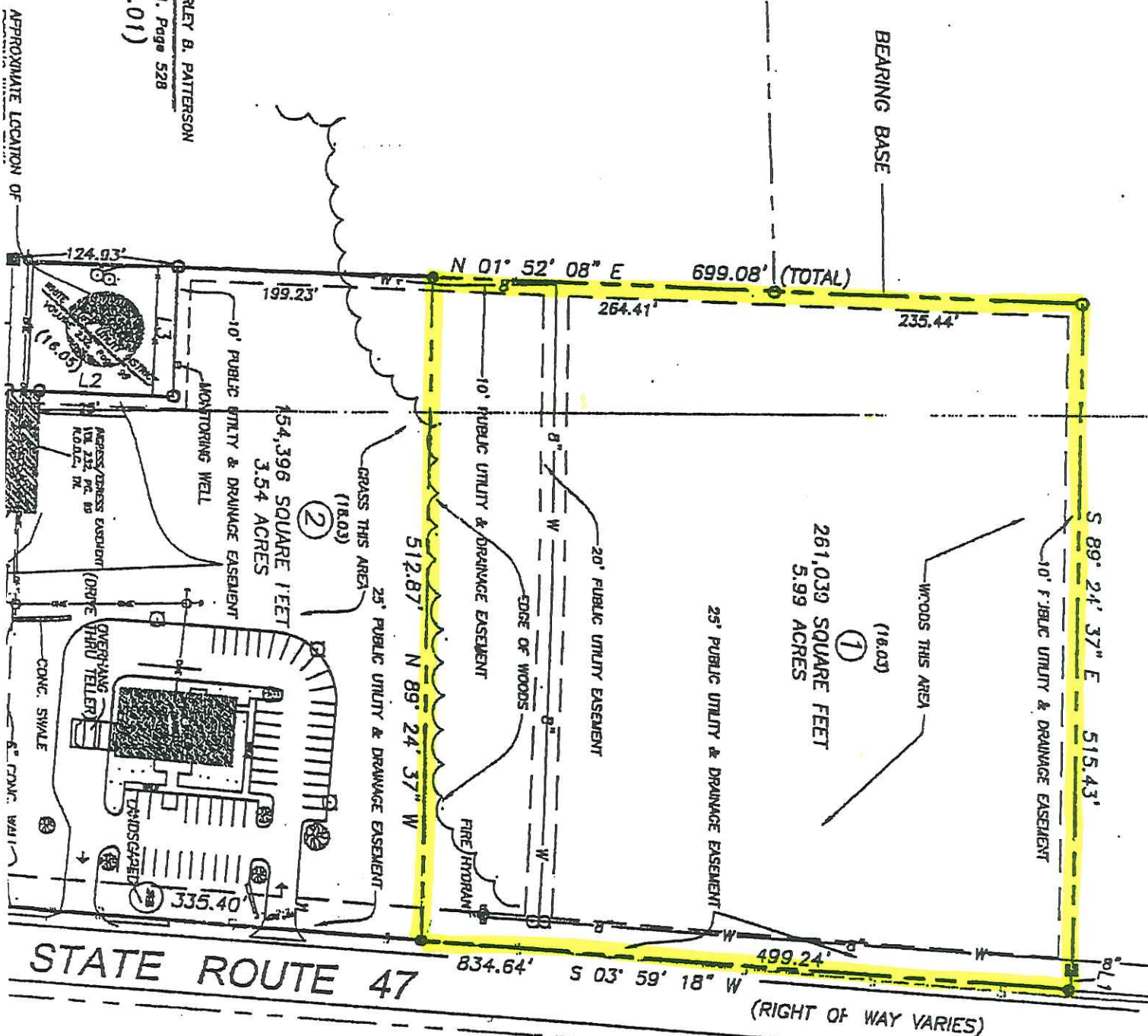
FIRST FARMERS AND MERCHANTS SUBDIVISION

TOWN OF WHITE BLUFF, TWELFTH CIVIL DISTRICT, DICKSON COUNTY, TENNESSEE

CERTIFICATE OF APPROVAL OF INTERESTS	CERTIFICATE OF APPROVAL OF ACQUISITION OF INTERESTS	CERTIFICATE OF APPROVAL OF INTERESTS
I, the Surveyor, certify that the above plat is a correct and true copy of the original plat as filed in the office of the Register of Deeds for the County of Dickson, Tennessee. I have caused a correct and true copy of the above plat to be filed in the office of the Register of Deeds for the County of Dickson, Tennessee, and have caused a copy to be filed in the office of the Register of Deeds for the County of Dickson, Tennessee.	I, the Surveyor, certify that the above plat is a correct and true copy of the original plat as filed in the office of the Register of Deeds for the County of Dickson, Tennessee. I have caused a correct and true copy of the above plat to be filed in the office of the Register of Deeds for the County of Dickson, Tennessee, and have caused a copy to be filed in the office of the Register of Deeds for the County of Dickson, Tennessee.	I, the Surveyor, certify that the above plat is a correct and true copy of the original plat as filed in the office of the Register of Deeds for the County of Dickson, Tennessee. I have caused a correct and true copy of the above plat to be filed in the office of the Register of Deeds for the County of Dickson, Tennessee, and have caused a copy to be filed in the office of the Register of Deeds for the County of Dickson, Tennessee.

ANCE
17'
00'
00'

BRYANT C/O SHIRLEY B. PATTERSON
 Deed Book 71, Page 528
 (16.01)



THE TOWN OF WHITE BLUFF, TN
 THEREFORE, THIS SURVEYOR IS
 IS WITHIN A FLOOD HAZARD Z

SHA